

# CCG ORGANISATION - APPENDICES

## APPENDIX A

### GERMAN CENTRAL MINISTRIES & CCG COUNTERPART DIVISIONS<sup>1</sup>

GERMAN MINISTRY	CCG DIVISION/BRANCH
	<b>MILITARY DIVISIONS</b>
OBERKOMMANDO DER WEHRMACHT	CHIEF OF STAFF <ul style="list-style-type: none"> <li>• Administration</li> <li>• Operations</li> <li>• Intelligence</li> <li>• Communications</li> </ul>
OBERKOMMANDO DER KRIEGSMARINE	NAVAL DIVISION <ul style="list-style-type: none"> <li>• Disarmament</li> <li>• Disbandment</li> <li>• Ministerial Control</li> </ul>
OBERKOMMANDO DES HEERES	ARMY DIVISION
<ul style="list-style-type: none"> <li>• SS Führungshauptamt</li> <li>• (SS Operational HQ)</li> <li>• Organisation Todt Zentrale</li> <li>• (Todt Organisation Head Office)</li> <li>• Reichsarbeitsführung</li> <li>• Labour Service High Command)</li> <li>• Nationalsozialistische Kraftfahrkorps Hauptämter (National Socialist Transport Corps HQ)</li> </ul>	<ul style="list-style-type: none"> <li>• General Staff</li> <li>• A Branch</li> <li>• B Branch</li> </ul>
REICHSLUFTFAHRTMINISTERIUM	AIR DIVISION <ul style="list-style-type: none"> <li>• Air (incl intelligence)</li> <li>• Personnel</li> <li>• Signals</li> <li>• Disarmament</li> </ul>
	<b>ECONOMIC DIVISION</b>
REICHSWIRTSCHAFTSMINISTERIUM (Ministry of Economics)	
REICHSMINISTERIUM FÜR RÜSTUNG UND KRIEGSPRODUKTION (Ministry of Armaments and War Production)	<ul style="list-style-type: none"> <li>• Coordination</li> </ul>
BEAUFTRAGTE FÜR DEN VIERJAHRESPLAN (Four Year Plan Office – if extant)	<ul style="list-style-type: none"> <li>• Planning &amp; Intelligence</li> </ul>
WEHRWIRTSCHAFTSAMT OKW (OKW Defence Economy Office)	
AUSWÄRTIGESAMT, HANDELPOLITISCHE ABTEILUNG Ministry for Foreign Affairs Trade-Political (Commercial Department)	<ul style="list-style-type: none"> <li>• Commercial</li> </ul>
REICHSMINISTERIUM FÜR ERNÄHRUNG UND LANDWIRTSCHAFT (Ministry for Food and Agriculture) REICHSNÄHRSTAND (Reich Food Estate) REICHSFORSTAMT (Reich Forestry Office)	<ul style="list-style-type: none"> <li>• Food &amp; Agriculture</li> </ul>
GENERALBEVOLLMÄCHTIGER FÜR DIE REGELUNG DER BAUWIRTSCHAFT (Commissioner-General for Building Control)	<ul style="list-style-type: none"> <li>• Building Industries</li> </ul>
GENERALINSPEKTOR FÜR WASSER UND ENERGIE (Inspector-General for Water and Power)	<ul style="list-style-type: none"> <li>• Fuel, Power &amp; Public Utilities</li> </ul>
REICHSWIRTSCHAFTSMINISTERIUM (Ministry of Economics)	<ul style="list-style-type: none"> <li>• Chemical Industries</li> <li>• Metallurgy</li> <li>• Electrical Industries</li> <li>• Instruments &amp; Signal Equipment</li> <li>• Ship-Building &amp; Ship-Repairing</li> </ul>
REICHSMINISTERIUM FÜR RÜSTUNG UND KRIEGSPRODUKTION (Ministry of Armaments and War Production)	<ul style="list-style-type: none"> <li>• Aircraft</li> <li>• Armaments &amp; Machine Tools</li> <li>• Heavy &amp; Light Engineering</li> </ul>
BEAUFTRAGTE FÜR DEN VIERJAHRESPLAN (Four Year Plan Office – if extant)	

<sup>1</sup> Source: Appendix G to 10<sup>th</sup> Report on visits to SHAEF Advance HQ and SHAEF Main 10-13 April 1945. National Archives File FO1005/1634

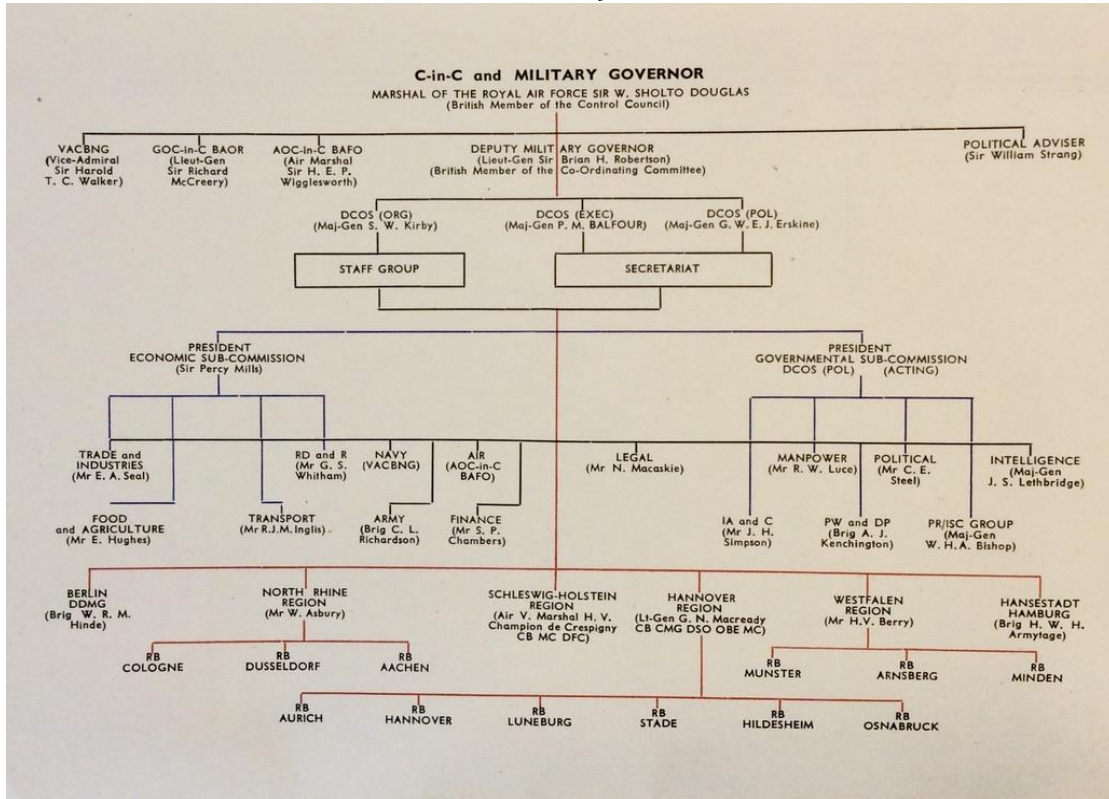
GERMAN MINISTRY	CCG DIVISION/BRANCH
	<ul style="list-style-type: none"> <li>Textiles &amp; Light Manufactures</li> <li>Disposals</li> </ul>
	<b>FINANCE DIVISION</b>
No direct contact	<ul style="list-style-type: none"> <li>Coordination &amp; Liaison Section</li> <li>Intelligence Section</li> </ul>
REICHSFINANZMINISTERIUM UND REICHSRECHNUNGSHOF (Reich Finance Ministry and Reich Accounting Office)	<ul style="list-style-type: none"> <li>Public Revenue &amp; General Finance Branch</li> <li>Public Expenditure &amp; Occupation Budget</li> </ul>
REICHSBANK, REICHSWIRTSCHAFTSMINISTERIUM (for banking, foreign exchange & Insurance) and REICHSPOSTMINISTERIUM (for Note Printing Works)	<ul style="list-style-type: none"> <li>Banking</li> </ul>
REICHSJUSTIZMINISTERIUM (Reichkommissar – Enemy Property) and REICHSFINANZMINISTERIUM	<ul style="list-style-type: none"> <li>Property Control</li> </ul>
No direct contact (except Reichsbank for currency)	<ul style="list-style-type: none"> <li>Currency, Accounts and Investigations</li> </ul>
	<b>TRANSPORT DIVISION</b>
No direct contact	<ul style="list-style-type: none"> <li>Co-ordination Section</li> <li>Allocation Section</li> <li>Intelligence Section</li> <li>Finance Section</li> </ul>
REICHSVERKEHRSMINISTERIUM (Ministry of Transport) REICHSAUTOBAHNSTELLEN (semi-autonomous, linked to Ministry by Common Chief – Nazi) GENERALINSPEKTOR FÜR DAS DEUTSCHE STRASSENWESEN (IG of Roads – Nazi)	<ul style="list-style-type: none"> <li>Roads</li> </ul>
REICHSVERKEHRSMINISTERIUM (Ministry of Transport) GENERALINSPEKTOR FÜR WASSER UND ENERGIE (Speer – Nazi)	<ul style="list-style-type: none"> <li>Inland Water Transport</li> </ul>
REICHSVERKEHRSMINISTERIUM (Ministry of Transport) REICHSKOMMISSAR FÜR SEESCHIFFFAHRT (Kaufman)	<ul style="list-style-type: none"> <li>Ports</li> </ul>
REICHSVERKEHRSMINISTERIUM (Ministry of Transport) REICHSKOMMISSAR FÜR SEESCHIFFFAHRT (Commissioner for Shipping – Nazi)	<ul style="list-style-type: none"> <li>Shipping</li> </ul>
	<b>MANPOWER DIVISION</b>
No direct contact	<ul style="list-style-type: none"> <li>Coordination Section</li> <li>Finance Section</li> <li>Intelligence Section</li> </ul>
REICHSARBEITSMINISTERIUM (Ministry of Labour) (Overruling power with Plenipotentiary for Employment & distribution of labour of Four Year Plan) DEUTSCHE ARBEITSFRONT (German Labour Front) Compulsory Trade Union for all employers and employees REICHSTREUHÄNDER DER ARBEIT (trustees of Labour – Nazi) REICHSNÄHRSTAND (Reich Food Estate) (for supply of agricultural labour – Nazi)	<ul style="list-style-type: none"> <li>Industrial relations</li> <li>Employment &amp; Labour Supply</li> <li>Social Insurance &amp; Unemployment Relief</li> </ul>
REICHSARBEITSMINISTERIUM (Ministry of Labour) DEUTSCHE ARBEITSFRONT (German Labour Front) REICHSWOHNUNGSKOMMISSAR (Reich Housing Commissioner) BAUPOLIZEI (Building Police) NATIONALSOZIALISTISCHE VOLKSWOHLFAHRT (Housing activities) BAUGENOSSENSCHAFTEN (Building societies and building loans) DEUTSCHE ARBEITSFRONT (German Labour Front)	<ul style="list-style-type: none"> <li>Housing</li> </ul>
	<b>INTERNAL AFFAIRS &amp; COMMUNICATION</b>
No direct contact	<ul style="list-style-type: none"> <li>Coordination Section</li> <li>Intelligence Section</li> </ul>
REICHINNENMINISTERIUM (Ministry of Interior) (All Departments other than veterinary, Health & Police)	<ul style="list-style-type: none"> <li>Administration &amp; Local Government</li> </ul>
REICHINNENMINISTERIUM (Ministry of Interior) (Veterinary & Health departments)	<ul style="list-style-type: none"> <li>Health</li> </ul>
CHEF DER DEUTSCHEN POLIZEI IM REICHSMINISTERIUM DES INNERN (Chief of Police in Ministry of Interior. At present combined with Reich Leader SS Himmler)	<ul style="list-style-type: none"> <li>Public Safety</li> </ul>
No central authority MINISTERIUM FÜR WISSENSCHAFT, ERZIEHUNG & VOLKSBILDUNG (Monuments & Fine Arts Section)	<ul style="list-style-type: none"> <li>Monuments, Fine Arts &amp; Archives</li> </ul>

GERMAN MINISTRY	CCG DIVISION/BRANCH
REICHINNENMINISTERIUM (Ministry of Interior) (Archives Section)	
MINISTERIUM FÜR WISSENSCHAFT, ERZIEHUNG UND VOLKSBILDUNG (Ministry of Science, Education and People's Culture)	<ul style="list-style-type: none"> <li>• Education &amp; Religious Affairs</li> </ul>
REICHSMINISTERIUM FÜR DIE KIRCHLICHEN ANGELEGENHEITEN (Reich Ministry of Religious Affairs)	
REICHSPHOTOGRAPHENAMT (Reich Ministry of Posts & Telegraphs)	<ul style="list-style-type: none"> <li>• Posts &amp; Telegraphs</li> </ul>
	<b>LEGAL DIVISION</b>
No central authority	<ul style="list-style-type: none"> <li>• Coordination Section</li> <li>• Intelligence &amp; Liaison Section</li> <li>• Military Government Courts</li> <li>• Legal Advice &amp; Drafting</li> </ul>
REICHSGERICHTSAMT	Ministry of Justice Control
No single authority (dealt with by functional Ministries)	Administrative Tribunals Control
OKW initially	German Courts Martial Control
	<b>POLITICAL DIVISION</b>
REICHSMINISTERIUM FÜR VOLKSAUFKLÄRUNG UND PROPAGANDA (Ministry of Enlightenment & Propaganda – Nazi)	<ul style="list-style-type: none"> <li>• Coordination Section</li> <li>• Information Services Control</li> </ul>
AUSWÄRTIGESAMT (Foreign Office)	<ul style="list-style-type: none"> <li>• Political</li> </ul>
No central authority	<ul style="list-style-type: none"> <li>• Public Relations</li> </ul>
	<b>PRISONERS OF WAR &amp; DISPLACED PERSONS DIVISION</b>
OBERKOMMANDO DER WEHRMACHT (for Prisoners of War)	Prisoners of War
No central authority	<ul style="list-style-type: none"> <li>• Displaced Persons</li> <li>• Refugees</li> </ul>
	<b>REPARATION, DELIVERIES &amp; RESTITUTION DIVISION</b>
No central authority	

APPENDIX A. German Ministries & CCG counterpart divisions. Source: Appendix G to 10<sup>th</sup> Report on visits to SHAEF Advance HQ and SHAEF Main 10-13 April 1945. National Archives File FO1005/1634

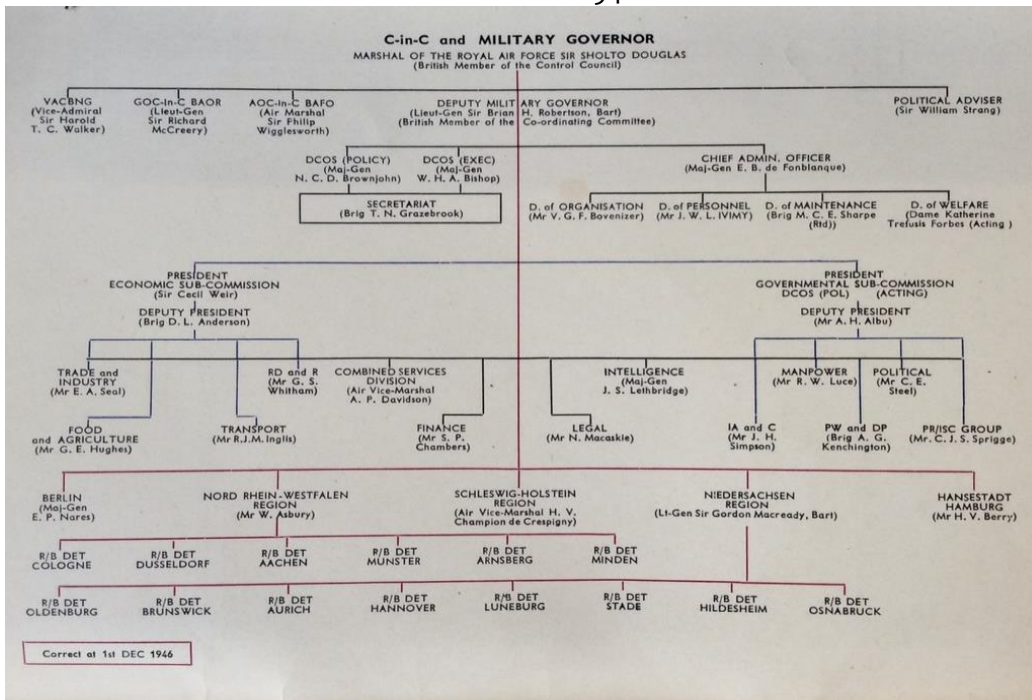
## APPENDIX B CCG ORGANISATION CHARTS

### A. June 1946



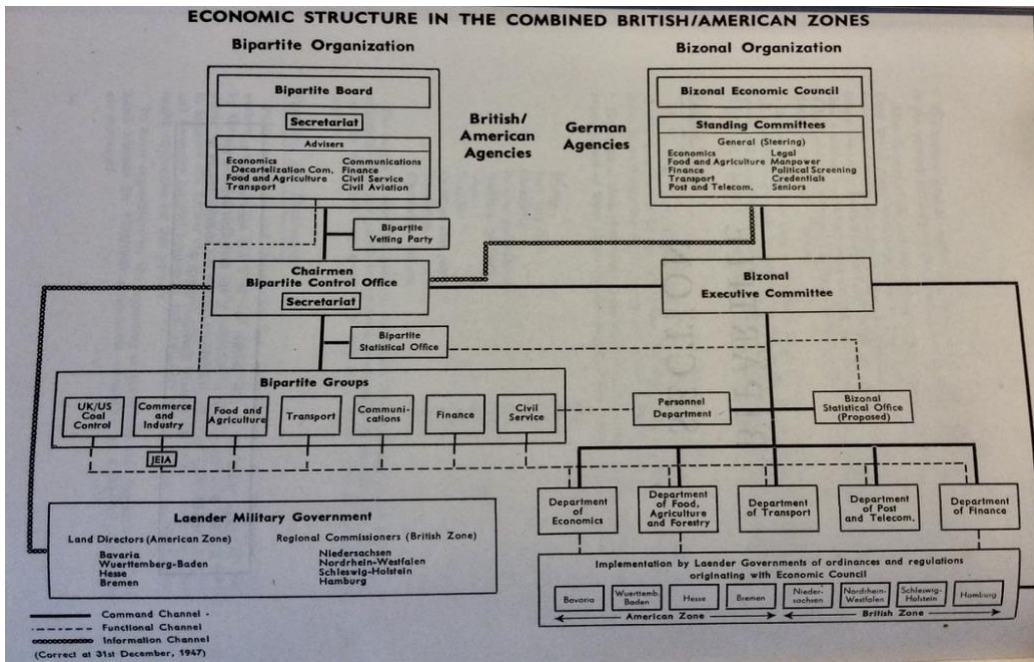
Source: CCG Monthly Report June 1946. IWM

### B. December 1946



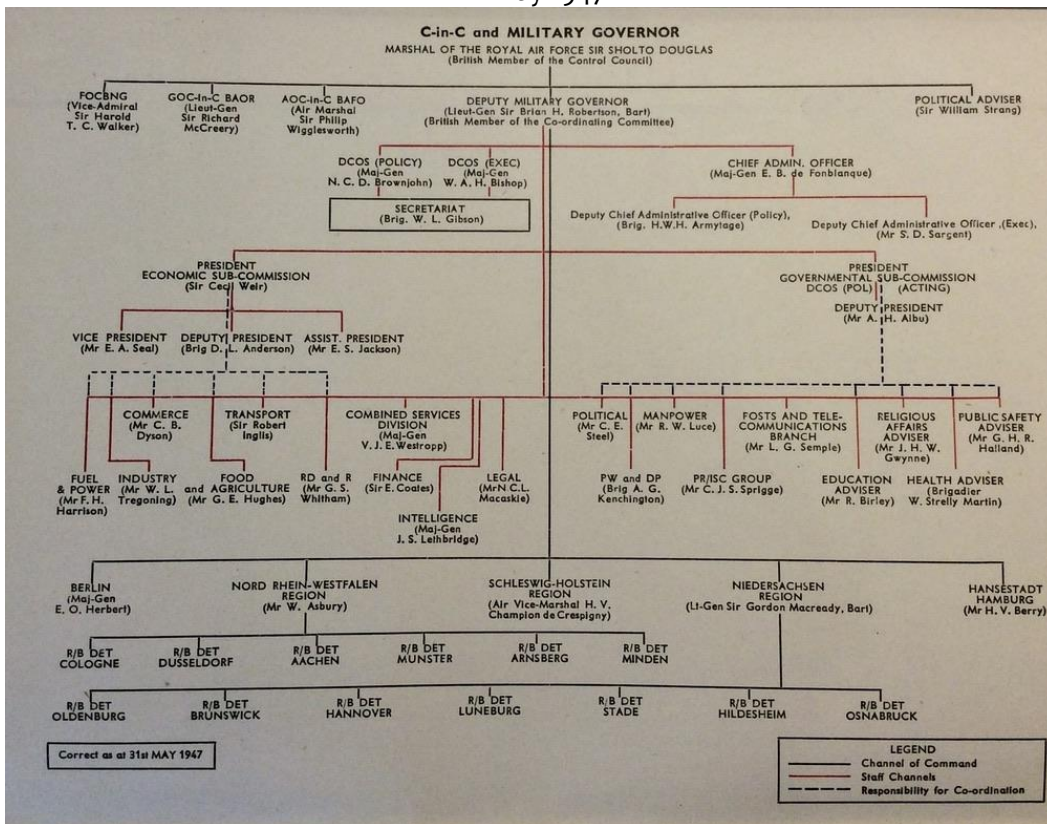
Source: CCG Monthly Report November 1946. IWM

C. Bizon organisation structure December 1948



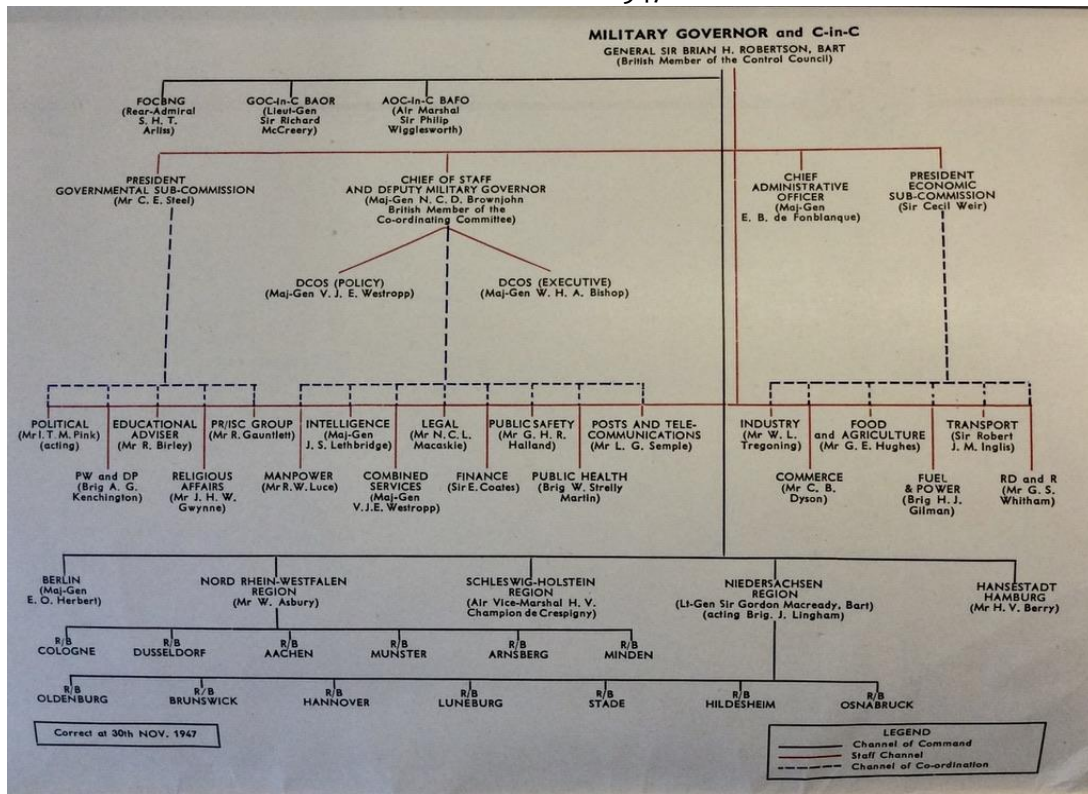
Source: CCG Monthly Report December 1947. IWM

D. May 1947



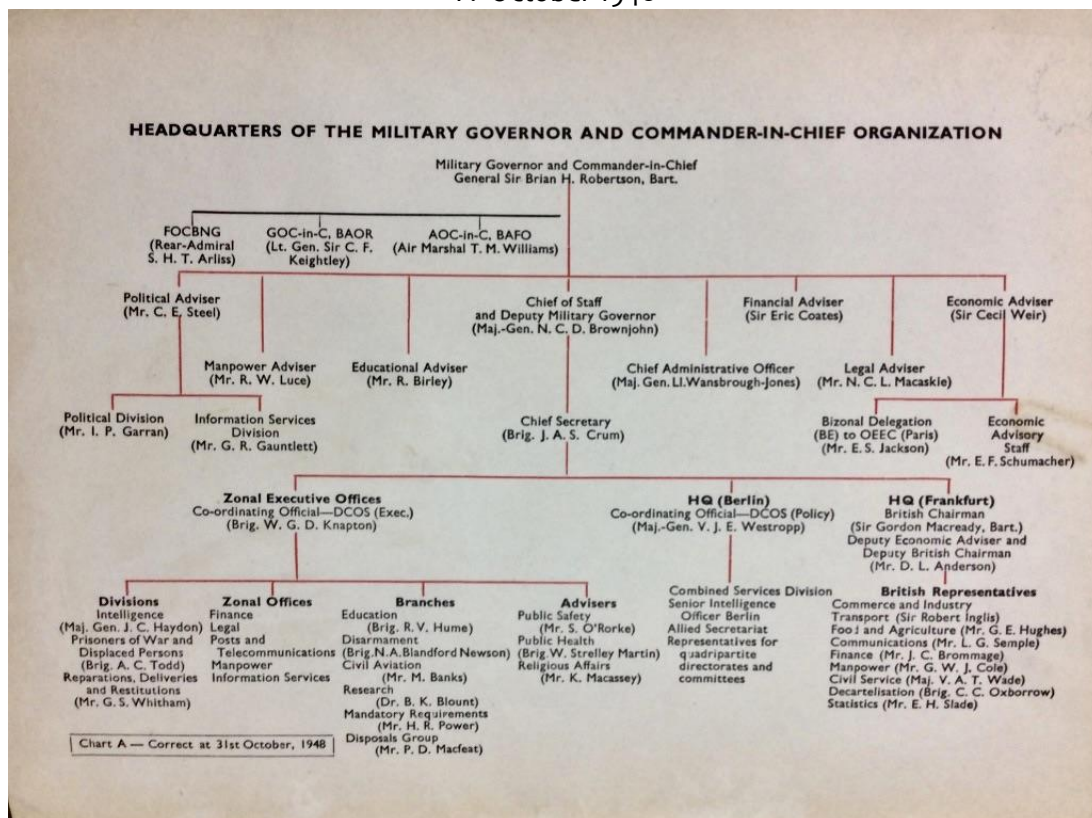
Source: CCG Monthly Report May 1947. IWM

E. November 1947



Source: CCG Monthly report November 1947. IWM

F. October 1948



Source: CCG Monthly Report October 1948. National Archives FO 1005/1978

## APPENDIX C

### CCG LOCATIONS IN THE BRITISH ZONE <sup>2</sup>

DIVISION	Branches/ units	LOCATIONS Main location in <b>bold</b>
Zonal Executive Offices	12	<b>Lübbecke</b> , Minden, Bad Salzuflen, Herford, Hamburg, Bad Oeynhausen, Baden-Baden
Trade & Industry	20	<b>Minden</b> , Bad Pyrmont, Hamburg, Essen, Leverkusen
Food & Agriculture	10	Hamburg, Hannover, Oldenburg, Bonn, Hamburg, Unna
Reparations, Deliveries & Restitution	6	<b>Detmold</b>
Transport	26	<b>Herford, Bielefeld, Hamburg</b> , Lustringen, Hannover, Göttingen, Kuperdren, Wuppertal, Cologne (Köln), Hannover-Bucholz, Duisbrg-Ruhrort, Hilstrup, Hamburg, Lübeck, Emden
Manpower	9	<b>Lemgo</b>
Internal Affairs & Communications	21	<b>Bunde</b> , Bad Salzuflen, Hannover, Braunschweig, Düsseldorf, Köln, Kiel, Münster, Dortmund, Hamburg, Hilstrup
Public Health	9	<b>Düsseldorf, Celle, Hamburg, Dortmund</b> , Kiel, Wuppertal, Verden, Neunkirchen, Goslar
Prisoners of War & Displaced Persons	42	<b>Lemgo</b> , Göttingen, Hannover, Rastede, Badrehburg, Luneburg, Uetze, Orbenjeza, Neheim, Bassum, Celle, Dalhausen, Hordstemmen, Wentdorf, Oldenburg, Meppen, Kiel, Lübeck, Bad Godesberg, Warendorf, Hamburg, Boghorst, Siegen, Hameln, Hilden, Hahenkee, Braunschweig, Marienthal, Bergen, Stade, Bedburg, Goslar, Osnabrück, Meschede
Political	4	<b>Lübbecke</b> , Hamburg
Finance	8	<b>Hamburg</b> , Oldenburg
Legal	10	<b>Herford</b>
Public Relations & Information Services Control	19	<b>Bunde</b> , Herford, Düsseldorf, Hamburg, Hannover, Köln, Kiel,
North German Timber Control	10	<b>Hamburg</b> , Duneburg, Minden
North German Coal Control	8	<b>Essen</b> , Hamborn, Recklinghausen, Bredeney, Bochum, Kohlscheid, Köln
T Force	14	<b>Bad Oeynhausen</b> , Kamen, Heisingen, Ratingen, Leichlingen, Bad Nenndorf, Grosse Ilsede, Rotenburg, Hamburg, Duneberg
Local Administrative Units	11	<b>Lübbecke, Berlin, Hamburg</b>
Intelligence	195	<b>Herford</b> + 90 locations

<sup>2</sup> Source: Location Statement 20 August 1946. National Archives File FO1032/961